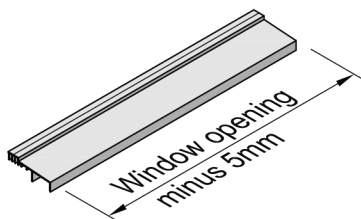


Silltray Installation Instructions

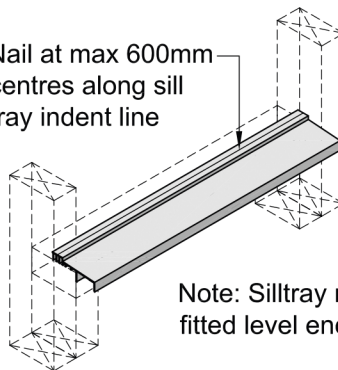
Note: Building wrap & flexible flashing tape must be fitted over framing to the requirements of E2/AS1



Measure window opening, deduct 5mm & cut Silltray to this length true & square

STEP 1

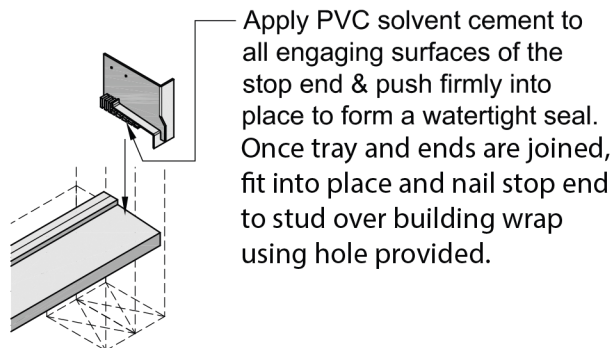
Nail at max 600mm centres along sill tray indent line



Note: Silltray must be fitted level end to end

Position & nail fix sill tray using inner downstand leg as a guide refer Detail ST-003

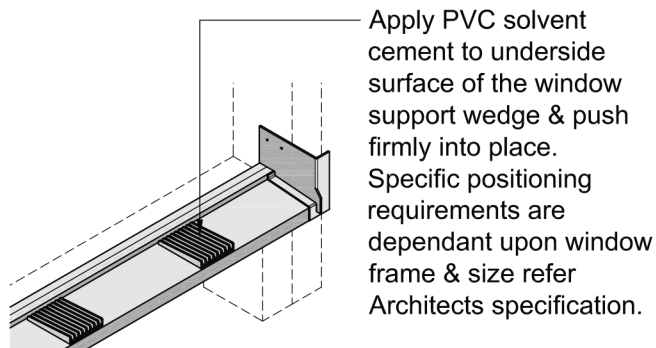
STEP 2



Apply PVC solvent cement to all engaging surfaces of the stop end & push firmly into place to form a watertight seal. Once tray and ends are joined, fit into place and nail stop end to stud over building wrap using hole provided.

Adhesive fix sill tray stop ends

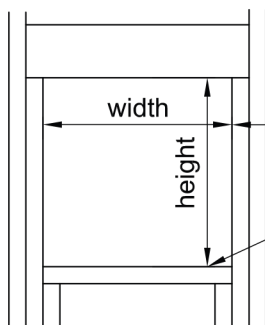
STEP 3



Apply PVC solvent cement to underside surface of the window support wedge & push firmly into place. Specific positioning requirements are dependant upon window frame & size refer Architects specification.

Adhesive fix window support wedges

STEP 4



10mm clearance is required between jamb liner & stud.
13mm clearance is required between underside of window liner & top of sill plate.
For window frame positioning refer Detail ST-003.

Window frame measurements, recommended clearances.

Installation Notes:

- Aluminium Window Manufacturers can supply packers tailored to their system which fit frame sill profile & provide firm support onto our support wedges, refer Detail ST-003. We recommend the use of these packers in all cases.
- 15mm must be added to the height of the window opening during framing.



Telephone: 64 3 3585 775

Facsimile: 64 3 3589 529

Email: sales@redway.co.nz

Website: www.e2flashings.co.nz